

# HotSpot User Instructions

## Windows XP:

1. Click on “Start” then “Control Panel.” (If “Control Panel” is not shown on your “Start” menu, select “Settings” first then “Control Panel.”)
2. Double-click on “Network Connections.” (You may need to click on “Switch to Classic View” to see this icon.) The “Network Connections” window will appear. *(Image A)*
3. Right-click on the “Wireless Network Connection” icon then click “View Available Networks.” (If this option is not available, click on “Enable” instead.) The “Wireless Network Connection” box will appear.
4. Click on “Coral Sands Wireless” and check the “Allow me to Connect...” check box, then click “Connect.” *(Image B)*

Image A

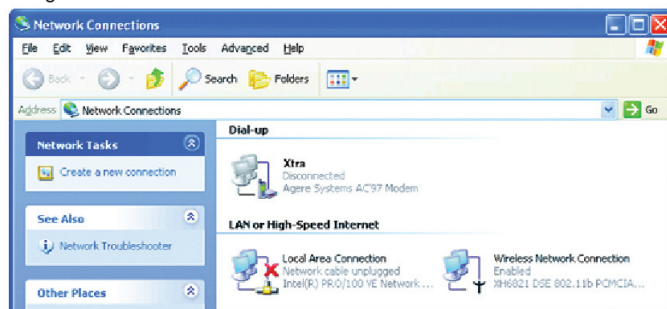


Image B



## Windows 2000, Me, 98, or Mac OS:

1. Open your Wi-Fi device configuration utility.
2. Use the configuration utility to scan for available networks.
3. From the list of available networks, connect to “Coral Sands Wireless.” (Ensure WEP encryption is turned off)

*Please note that these are generic instructions. For specific instructions for your own Wi-Fi device configuration software, refer to your device user instructions or the IT retailer where the device was purchased.*



For additional 24/7 technical support, call 888-289-5239.